



Be Driven



The All-New

EMGRAND

5 YEAR WARRANTY OR 150,000 KM WHICHEVER COMES FIRST



SCAN TO SEE DEALER LOCATIONS

GEELYPH.COM

*Be Driven
to Feel Confident*



Smooth and Fuel-Efficient
1.5L 4-Cylinder D-CVVT Engine



LED Headlights



17" Alloy Wheels

*Be Driven
to Stand Out*



Energy Pulse Front Grille



Masterfully-Sculpted Exterior



Rhythmic Tail Lights



Elegant Interior



*Be Driven
to Move with Ease*



12.3" Full Digital Instrument Panel



8" Infotainment Panel



Electric Parking Brake + Autohold



Hill Start Assist

*Be Driven
to Relax in Comfort*



Stylish Sunroof



Generous Legroom

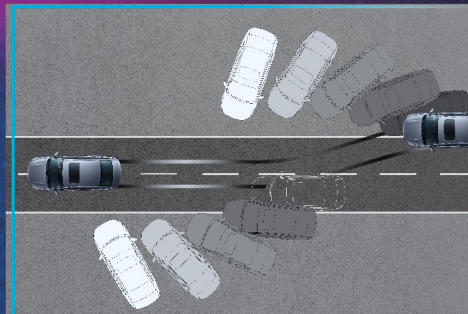


Intelligent Interactive Airconditioning

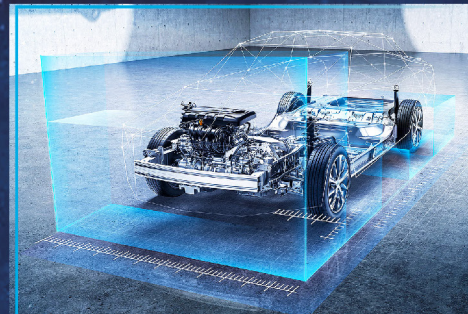
*Be Driven
to Enjoy Peace of Mind*



6 SRS Airbags



Antilock Braking System
+ Electronic Brakeforce
Distribution



Laser-Welded BMA Structure



CN95 Cabin Filters



Proud Teal



Dark Blue



Gold



Gray



Red



White

EMGRAND	S	COMFORT	PREMIUM
DRIVETRAIN & CHASSIS			
Engine	Inline-4, 16-valve, DOHC, with D-CVVT		
Capacity	1498cc		
Transmission	5-Speed Manual	Continuously Variable Transmission	
Manual Mode	-	8-Speed Tiptronic	
Power	102hp@5,600rpm		
Torque	142Nm@4,400-4,800rpm		
Emission Standard	Euro VI b		
Drive Modes	-	Eco, Comfort, Sport	
DIMENSIONS & CAPACITIES			
Length x Width x Height (mm)	4638 x 1822 x 1460		
Wheelbase	2650mm		
Ground Clearance	151mm		
Weight	1185kg	1250kg	
Seating Capacity	5		
Fuel Tank Capacity	50L		
Cargo Volume	500L		
SUSPENSION & BRAKES			
Front Suspension	MacPherson Strut		
Rear Suspension	Torsion Beam		
Front Brakes	Ventilated Disc		
Rear Brakes	Drum	Solid Disc	
Parking Brake	Lever Type	EPB with Auto Brake Hold	
Wheels	15" Steel with Hubcaps	17" Aluminum Alloy	
Tires	195 / 65R15	205 / 50R17	
Spare Tire	Space Saver		
EXTERIOR			
Headlights	Projector Halogen	Projector LED	
Auto Headlight Control	-	With	
Daytime Running Lights	LED		
Power Side Mirrors	With	With Power Fold and Defrost	
Hands-Free Trunk Release	-	With	
Antenna	Glass Printed		
INTERIOR			
Interior Color	Black		White & Blue
Infotainment System	8" Infotainment with Wireless Screen Mirroring via EasyConnection		
Speakers	2	4	6
Driver Seat	4-Way Manual	6-Way Manual	6-Way Power
Passenger Seat	4-Way Manual		
Rear Seats	60:40 Split Trunk Pass-Through with ISOFIX Tethers		
Seat Materials	Fabric	Leatherette and Suede	
Sunroof	-	With	
Airconditioning	Electronic with Intelligent Interactive System		
Rear AC Vents	With		
Gauge Cluster	Analog with 3.5" MID	12.3" Digital	
SAFETY & TECHNOLOGY			
Front Airbags	With		
Front Row Side Airbags	-	With	
Side Curtain Airbags	-	With	
Anti-Lock Braking System	With EBD		
Traction & Stability Control	With		
Hill Start Assist	With		
Reverse Camera	-	With	
Rear Parking Sensors	-	With	
Cruise Control	-	With	
Tire Pressure Monitoring System	With		
Immobilizer	With		
Central Locking	With	Speed-Sensing	

SGAP reserves the right to change specifications without prior notice AND photos are not representative of actual unit.

